

# CORNING

# Gilbert® RF GRS™ Hardline Connector

Corning Optical Communications RF LLC, which includes the former Gilbert technologies, continuously meets customer requirements for high-performance broadband connector products. The industry-leading GRS™ three-piece trunk and distribution connector series is designed for optimal performance in high-bandwidth, two-way, and digital communication systems.

Additionally, full duplex DOCSIS 3.1 deployment, which promises broadband connections at up to 10 Gbps down and 10 Gbps up over existing cables after core network and node upgrades, is enabled by the GRS connector.

## Features and Benefits:

- Collet and actuator design permits reuse by preventing connector lockup. Center conductor retention exceeds SCTE requirements.
- Dry film lubrication, installed at the factory, promotes connector reusability
- Support sleeve located in main nut assembly minimizes pullback required to insert cable into connector
- Independent seizure of center and outer conductors provides assurance of proper installation
- Visible entry of center conductor into seizing mechanism means there is no blind entry
- Domed insulator reduces possibility of moisture collecting at the KS interface
- Brass pins with bright acid tin plating for excellent RF conductivity
- Ethylene propylene O-rings, ozone and abrasion resistant
- Center conductor cutting guide
- Marked for easy cable application identification

## Performance Specs:

Bandwidth	5 MHz to 1218 MHz
Return Loss	Better than 30 dB to 1002 MHz and better than 28 dB to 1218 MHz
Insertion Loss	Less than .1 dB to 1218 MHz
Shielding Effectiveness	Greater than -130 dB to 1218 MHz
Operating Voltage	60 or 90 volts AC
Operating Current	25 amps continuous
Operating Temperature	-40°C to +70°C

## Physical Specs:

### Bodies

- Aerospace-grade 6000 series aluminum alloy
- Corrosion-resistant gold chromate finish

### Center conductors

- Tin-plated C36000 brass alloy for excellent conductivity

### Insulators

- Molded or machined acetyl or polycarbonate for high-stress applications

EPDM O-rings for superior UV and ozone resistance

Our hardline adapters are utilized in the following HFC networks: 90-degree adapter, 180-degree adapter, extensions, in-line splices, and port terminals.



Corning Optical Communications LLC • PO Box 489 • Hickory, NC 28603-0489 USA  
800-743-2675 • FAX: 828-325-5060 • International: +1-828-901-5000 • [www.corning.com/opcomm](http://www.corning.com/opcomm)

Corning Optical Communications reserves the right to improve, enhance, and modify the features and specifications of Corning Optical Communications products without prior notification. A complete listing of the trademarks of Corning Optical Communications is available at [www.corning.com/opcomm/trademarks](http://www.corning.com/opcomm/trademarks). All other trademarks are the properties of their respective owners. Corning Optical Communications is ISO 9001 certified. © 2017 Corning Optical Communications. All rights reserved. CRR-741-AEN / October 2017



CORNING

# Enabling Rapid Colocation Connections

At Corning, we understand that outsourcing the delivery of your IT resources is often the best business decision you can make. Whether you're working with a colocation facility, cloud services provider, or enterprise client, we can help by providing a range of products and solutions that offer the following benefits:

- Rapid deployments for low- to high-density applications
- Quick product availability so you can provide competitive SLAs
- Secure separation between live circuits for client piece of mind
- Usable vs. theoretical density
- Highly scalable platform for simple migration to higher-speed technologies and applications

This overview highlights the extensive range of solutions we developed for the meet-me room, main distribution area, and cage or hall environments.

For maximum flexibility, improved lead times, and a reduction in the total cost of ownership, you can count on Corning.

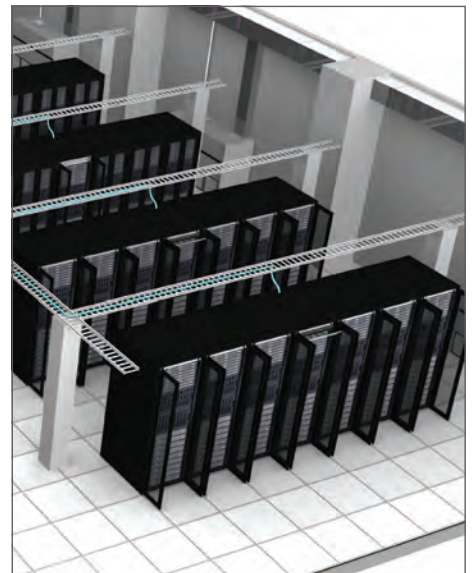
Meet-Me Room



Distribution Area



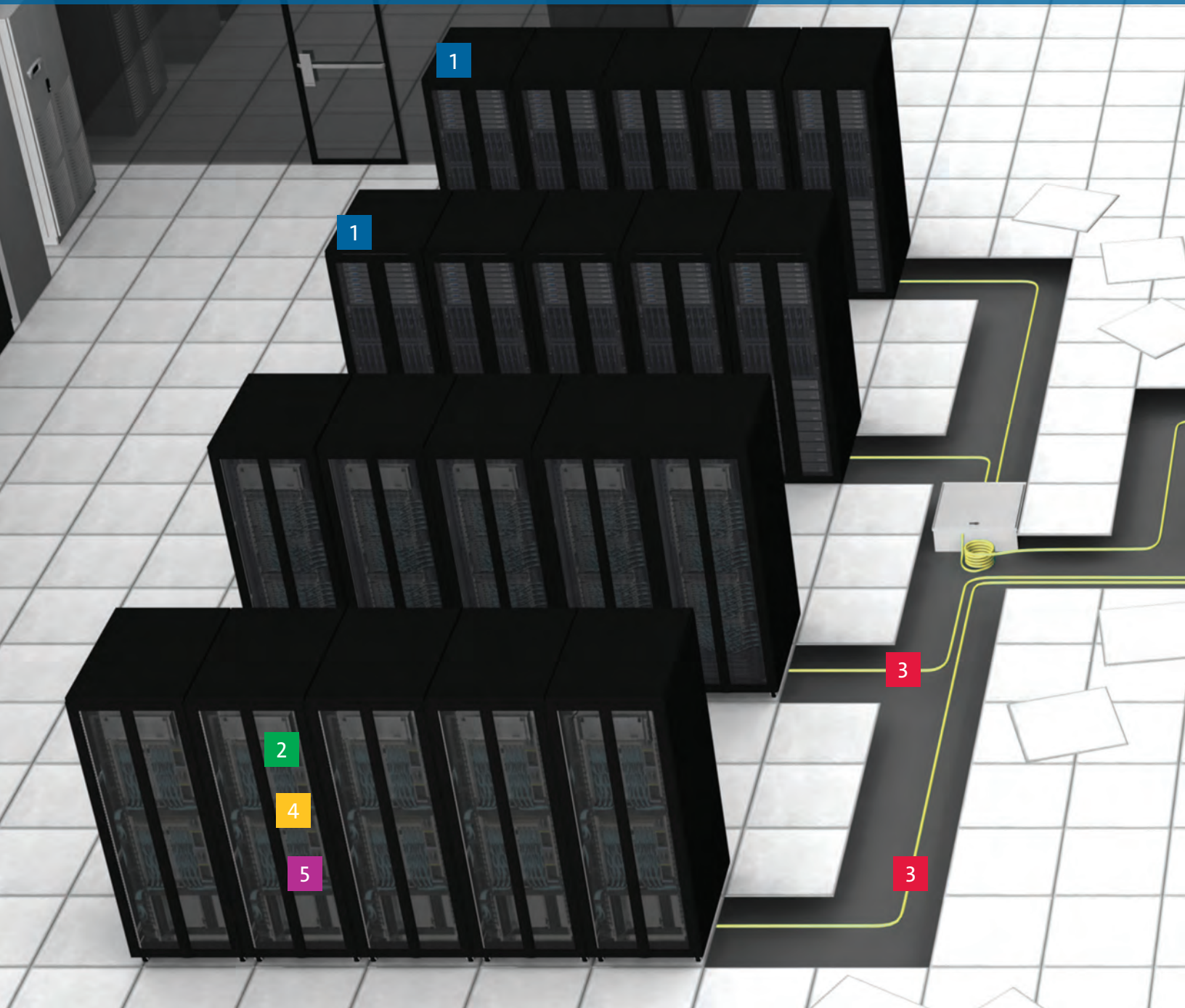
Cage



# Meet-Me Room

## The Corning Value

- Enables rapid deployments and solution flexibility with preterminated, splice and field-terminated components
- Corning single-mode bend-optimized fibers are ITU-T G.657.A1 compliant, ensuring signal integrity throughout the link
- Single jumper length for frames simplifies inventory
- Easy access to individual connections maintain the integrity of LIVE circuits
- Corning innovations allow use of every port without compromising client security
- Modular designs provide clear and simple migration paths to higher-speed technologies
- Worldwide distribution partners carry full solution inventory
  - Cable lengths can be made in days, not weeks, from Corning facilities



1



## Frames

- Up to 4,320 LC duplex connections with field-terminated, mechanical, and fusion splice options
- Up to 11,520 MTP® connections
- Single 4 m jumpers for all connections
- Simple access to individual circuits

4



## Connectivity Hardware

- Field-terminated, mechanical, and fusion splice for SC and LC duplex
- Preterminated for SC and LC duplex, MTP
- Base-2, Base-8, and Base-12 options for 1G to 400G applications
- Adapter panel options for Base-2, Base-8, and Base-12 networks

2



## Housings

- Fixed, sliding, and tilt-and-slide options
- Up to 288 LC duplex connections
- Full cable management capabilities
- Internal routing guides

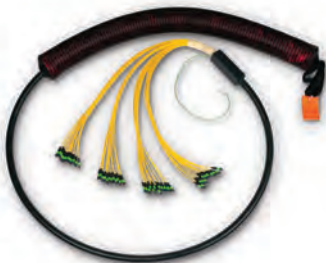
5



## Connectivity Cables

- Jumper in a box
- SC, LC, MTP jumpers
- Reverse polarity LC Uniboot jumpers

3



## Cables

- Indoor and indoor/outdoor cables for SC and LC duplex
- Preterminated indoor/outdoor trunks up to 864 fibers
- Plenum rated
- Reel in a box
- Preterminated indoor rated LC duplex and MTP trunks up to 576 fibers

## Product Focus – Corning Frames

Single, dual, or back-to-back quad frame designs require only a single 4 m jumper to simplify stock management in your facility.

And for true meet-me room scalability, in just a 42-square-meter footprint, we can support:

- Over 155,000 LC ports with a Centrix™ system frame
- Over 103,000 LC ports with an EDGE™ solution optical distribution frame (ODF)

# Main Distribution Area (MDA)

## The Corning Value

- High-density preterminated solutions reduce passive cabling footprint within data center
- Leverage a single-jumper length in cross-connect frames to simplify jumper inventory
- Corning single-mode bend-optimized fibers are ITU-T G.657.A1 compliant ensuring signal integrity throughout the link
- Complete cable management features, including open and single-handed access to ports, enabling ease of use and patching
- Universal wiring of preterminated components eliminates need for polarity management
- Port breakout capabilities for disaggregating higher-speed ports
- Supports network speeds from 1G to future-ready 400G



1



## Frames

- Preterminated, ultra-high-density for LC duplex and MTP® options
- Up to 4,320 LC duplex connections with field-terminated, mechanical, and fusion splice options
- Up to 11,520 MTP® connections
- Single 4 m jumpers for all connections
- Simple access to individual circuits

4



## Connectivity Hardware

- Preterminated for LC duplex, MTP breakout modules to support port disaggregation of parallel optic applications
- Base-2, Base-8, and Base-12 options for 1G to 400G applications
- Adapter panel options for Base-2, Base-8, and Base-12 networks
- Preterminated port

2



## Housings

- Fixed, sliding, and tilt-and-slide, floor zone box options
- Up to 288 LC duplex connections
- Up to 1,152 MTP connections
- Full cable management capabilities
- Internal routing guides
- Containment system mounting brackets

5



## Connectivity Cables

- Jumper in a box
- MTP jumpers
- Reverse polarity uniboot

3



## Cables

- Plenum rated
- Reel in a box
- Preterminated LC duplex and MTP trunks up to 576 fibers

## Product Focus – Corning® Fiber

Corning bend-insensitive fibers offer outstanding transmission performance in fiber optic cabling systems. Corning fiber was the **world's first** laser-optimized multimode fiber to withstand tight bends at or below a 7.5 mm radius with substantially less signal loss than traditional fibers, while being **fully standards compliant and backwards compatible.**

Customers find value in not having to worry about **bend radius**, and a robust fiber enables **easier cable routing** for neater installations. The additional optical performance maintains **signal integrity** in the most arduous of conditions.

# Titanium Ticket

## Your ticket to free closet connector housings (CCHs)

CORNING

Designed based on thousands of hours of customer feedback, our closet connector housings (CCHs) offer more than two dozen innovative features that make installation and troubleshooting of fiber optic connectivity faster, easier, and more cost effective.

From fiber and cable routing and strain relief, to port labeling and termination, these housings reduce the risk of error that can disrupt networks.

### Now, you can try a variety of our CLOSET CONNECTOR HOUSINGS FOR FREE! 04U, 03U, 02U, or 01U

Just select your preferred product mix from the list below, complete the shipping information, and return to your Corning sales engineer. We will ship your product free of charge!

#### CCH Bill of Materials:

Part Number	Quantity (fill in below)
CCH-04U	
CCH-03U	
CCH-02U	
CCH-01U	
<i>(Total should equal 10 housings)</i>	

#### Shipping Information:

*Note: Free housings will be shipped to the address provided on form. The shipment of free housings will not be combined with additional purchases.*

Name: \_\_\_\_\_

Job Title: \_\_\_\_\_

Company: \_\_\_\_\_

Shipping Address: \_\_\_\_\_

City: \_\_\_\_\_ State: \_\_\_\_\_ Zip Code: \_\_\_\_\_

Phone: \_\_\_\_\_

Email: \_\_\_\_\_



#### \*Terms and Conditions:

- Valid in U.S. and Canada only
- Ticket expires December 31, 2017
- Limit 10 housings per coupon while supplies last
- Limit of two tickets per company for duration of promotion

\*While supplies last. This offer is void where prohibited. The winner is responsible for complying with all the laws including tax laws, as well as any policies of his employer regarding gifts and prizes. Federal, state, and local governments, including their employees and representatives, are not eligible to participate. Taxes, if any, are under the sole responsibility of the recipient of the gift.